

CHARLOTTE

A Nationally Renowned Health Care Center

CHARLOTTE'S QUALITY HEALTH CARE FACILITIES and health professionals serve more than 1 million patients a year. These patients come not only from Mecklenburg County but also from nearly every other North Carolina county, other U.S. states and a number of foreign countries, seeking the sophisticated treatment and state-of-the-art medical technology Charlotte-Mecklenburg hospitals provide.

Prominent national and international specialists come to Charlotte to teach, practice and conduct research in such specialties as laser surgery, heart disease, organ transplantation, orthopedics and spinal cord injuries. Charlotte-Mecklenburg provides cutting edge technology and quality health care with a personal touch at competitive costs.

CHARLOTTE-MECKLENBURG IS FIRMLY ESTABLISHED AS ONE OF THE NATION'S MOST RECOGNIZED AND RESPECTED REGIONAL HEALTH CARE CENTERS.



Two Hospital Systems Serving the Region

The major acute care hospitals in Charlotte-Mecklenburg account for nearly 2,500 hospital beds and represent two health care systems—Carolinas HealthCare System and Novant Health.

Carolinas HealthCare System carolinashealthcare.org

Carolinas HealthCare System (CHS) is one of the nation's largest public, not-for-profit systems and the most prominent health care system in the Carolinas. 2011 revenues totaled \$6.9 billion. CHS operates 38 hospitals in the Carolinas, including four acute care hospitals, an inpatient behavioral health hospital and a rehabilitation hospital in Mecklenburg County. CHS also operates a regional network primary and specialty care physicians. Carolinas Medical Center is designated as the official Poison Control Center for North Carolina, offering 24-hour support.

Carolinas Medical Center carolinasmedicalcenter.org

1000 Blythe Blvd., Charlotte, NC 28203 704.355.2000

Carolinas Medical Center (CMC) is the flagship facility of Carolinas HealthCare System. The facility is ranked by U.S. News & World Report among the nation's "Best Hospitals" in orthopedics and is also recognized as Charlotte's most preferred hospital for 14 years by the National Research Corporation. For the 13th year, consumers have chosen

CMC as having the highest overall quality and reputation, as well as the best doctors and nurses. An academic medical center teaching hospital, it also includes the Sanger Heart and Vascular Institute, which is nationally recognized with more than eighty heart specialists on staff. The Neuroscience and Spine Institute, nationally ranked at the top of comparable neurology centers by NeuStrategy, and the Blumenthal Cancer Center are also located here. Additionally, CMC offers a Women's Institute that specializes in the diagnosis and management of women's medical and reproductive conditions.

Levine Children's Hospital levinechildrenshospital.org

1000 Blythe Blvd., Charlotte, NC 28203 704.381.2000

Levine Children's Hospital has been ranked in the top 50 "Best Children's Hospitals" in the nation in five pediatric specialties, based on U.S. News and World Report's 2014-2015 rankings. With 234 beds (100 pediatric beds; 85 neonatal beds; 13 rehabilitation beds; 36 observation and day beds), Levine is the most comprehensive children's hospital between Washington, D.C., and Atlanta, Ga., offering care in more than 30 specialties and sub-specialties. Specialized services unique to the Charlotte region include a 24-hour children's emergency department. The hospital offers pediatric surgery, a pediatric kidney, liver, and heart transplant program, a pediatric intensive care unit and a children's diagnostic center (with state-of-the-art imaging capabilities and a pediatric MRI suite). Levine also features a day hospital, which comprises an infusion center and



PRESBYTERIAN HEALTHCARE



CHARLOTTE'S HEALTH CARE COST RANKS SIXTH LOWEST AMONG MID-SIZED CITIES.

infusion therapy procedure room for cancer patients as well as a children's rehabilitation pavilion.

Carolinas Medical Center — NorthEast

920 Church St. North, Concord, NC 28025 704.403.3000

A 457-bed medical center, CMC-NorthEast is home to such Centers of Excellence as the Batten Cancer Center, Cannon Heart Center, Diagnostics and Imaging Center, Emergency Care Center, Hayes Family Center, and Surgery Center, as well as Jeff Gordon's Children's Hospital. CMC-NorthEast has a reputation for excellence built on advanced technology, medical staff talent, quality and compassionate care.

Carolinas Medical Center — Mercy

2001 Vail Ave., Charlotte, NC 28207 704.304.5000

Licensed for 173 beds, CMC-Mercy is an acute-care medical facility featuring several advanced specialty services: the Heart Center, the Lung Center, Southeast Pain Care, the Bariatric Center and the Sleep Center. CMC-Mercy also houses Mercy Horizons, a medical inpatient detoxification program for adults.

Carolinas Medical Center — Pineville

10628 Park Rd., Charlotte, NC 28210 704.667.1000

Located in southern Mecklenburg, CMC-Pineville is a growing full-service hospital serving southern Mecklenburg, Lancaster and York Counties, featuring a popular birthing center, emergency services and cardiac care. Recent expansions include radiation services and surgical oncology, neurosurgery, robotic surgery and advanced cardiopulmonary services.

Carolinas Medical Center — University

8800 N. Tryon St., Charlotte, NC 28262 704.863.6000

J.D. Power and Associates has recognized the Maternity Center at CMC-University for "Outstanding Patient Experience." The Maternity Center includes a Level III Special Care Neonatal Nursery and family-friendly maternity suites. The Emergency Department is the second busiest in Mecklenburg County with more than 65,000 annual patient visits.

Carolinas Medical Center — Randolph

501 Billingsley Rd., Charlotte, NC 28211 704.444.2400

CMC-Randolph provides inpatient and outpatient care for psychiatric and behavioral health disorders. The facility features one of the region's two dedicated psychiatric emergency departments staffed by board-certified physicians 24 hours a day.

Carolinas Rehabilitation

1100 Blythe Blvd. Charlotte, N.C. 28203 704.355.4300

Carolinas Rehabilitation's main hospital is one of the nation's largest free-standing, non-profit inpatient rehabilitation centers, specializing in rehabilitation for patients with brain and spinal cord injuries. Other locations specialize in stroke, non-traumatic injuries, amputations and orthopedic rehabilitation.

Educational Opportunities

CMC residency programs are conducted in 15 medical and dental specialties. CMC is one of five N.C. designated academic medical center teaching hospitals. In 2010, CMC was named the "Charlotte Campus" of the University of North Carolina School of Medicine. CMC-Northeast provides a residency program in family medicine. Additionally, Carolinas College of Health Sciences trains nurses, nurse anesthetists, and medical, surgical, and radiological technologists. CMC-Mercy School of Nursing offers a diploma in nursing.

Health Care Cost Index for Mid-Sized Cities

Rank	City	Cost Index
1	Nashville, TN	81.5
2	Houston, TX	91.2
3	Tampa, FL	91.5
4	Atlanta, GA	96.3
5	Columbia, SC	97.5
6	Charlotte, NC	97.9
7	Dallas, TX	100.5
8	Winston-Salem, NC	100.7
9	Raleigh, NC	104.7
10	Wilmington, NC	115.7

Source: C2ER Cost of Living Index, 2014 First Quarter

Novant Health

novanthealth.org

Novant Health is a not-for-profit health care provider serving the Southern Piedmont region of North Carolina. Novant Health is nationally recognized for superior patient care. SDI Health ranked Novant Health 21st nationally among the 2012 Top 100 Integrated Healthcare Networks. Additionally, Optum-Health named Novant Health a 2011 Center of Excellence for the Novant Health Bariatric Center. In 2014, Novant Health's Charlotte hospitals were named Magnet Health Care facilities by the American Nurses Credentialing Center, a status that has been awarded to only 6.9 percent of the nation's hospitals for excellence in nursing care.

In the Charlotte area, Novant Health five hospital facilities and a network of primary care and specialty physicians providing integrated health care. With more than 11,000 employees regionally, Novant Health operates three acute care hospitals, two specialty hospitals, outpatient surgery centers, eight urgent care locations and physician's offices in Charlotte. All three of the acute care hospitals are designated primary stroke centers and are designated as accredited chest pain centers.

Novant Health Medical Centers

Novant Health Presbyterian Medical Center

200 Hawthorne Ln., Charlotte, NC 28204 704.384.4000

Novant Health Presbyterian Medical Center is a 622-bed acute care hospital offering comprehensive cardiovascular, cancer, neurological, women's and orthopedic care.

Novant Health Huntersville Medical Center

10030 Gilead Rd., Huntersville, NC 28078 704.316.4000

Novant Health Huntersville Medical Center is a 75-bed community hospital that offers a full range of medical services and special amenities. Due in large part to community support, the hospital recently expanded, adding two new floors and 15 more licensed beds.

Novant Health Matthews Medical Center

1500 Matthews Township Pkwy., Matthews, NC 28105
704.384.6500

The Matthews location is a 137-bed community hospital that offers a full range of medical services and the area's first health library open to the public.

Novant Health Charlotte Orthopedic Hospital

1901 Randolph Rd., Charlotte, NC 28207 704.316.2000

Novant Health Charlotte Orthopedic Hospital is the region's only orthopedic hospital. With 80 beds, the hospital offers comprehensive orthopedic care for diseases and injuries of the bones and joints using advanced diagnostic treatment and rehabilitative procedures.

Novant Health Hemby Children's Hospital

200 Hawthorne Ln., Charlotte, NC 28204 704.384.4021

Novant Health Hemby Children's Hospital is dedicated to providing patients and their families with compassionate care in a family-centered environment.

Comprehensive Care

Novant Health Heart and Vascular Institute is nationally recognized as a leader in heart and vascular care and has affiliated with the Cleveland Clinic to provide world-class cardiovascular services.

Novant Health Cancer Center offers the latest in diagnostic, treatment and rehabilitation services for patients facing lung, breast, prostate, colorectal, bladder, gynecological and skin cancer.

Novant Health Women's Center is a special place dedicated solely to the medical needs of women and newborns, offering luxuriously furnished patient rooms, special amenities and a comprehensive range of medical services.

Novant Health Stroke and Neurosciences Center provides comprehensive care for the diagnosis and treatment of neurological and nerve disorders.

Educational Opportunities

Presbyterian School of Nursing at Queens University offers students the following degree options: Associate of Science in Nursing (ASN), Bachelor of Science in Nursing (BSN), Master of Science in Nursing (MSN), as well as RN-to-BSN and RN-to-MSN programs. The Novant Health Radiologic Technology Program offers a certificate in radiologic technology, preparing graduates to enter into an imaging science career.

Medical Plazas

Presbyterian Medical Plaza Ballantyne

14215 Ballantyne Corporate Pl., Charlotte, NC 28277
704.384.4000.

Presbyterian Medical Plaza Ballantyne offers a wide range of outpatient health services, including diagnostic imaging, surgery and sleep medicine, as well as primary and specialty physician care.

Presbyterian Medical Plaza Steelescroft

13557 Steelescroft Pkwy., Charlotte, NC 28278
704.384.4000

Presbyterian Medical Plaza Steelescroft offers residents of the Steele Creek and Southwest Mecklenburg communities access to radiology services, rehabilitation services, and primary care from pediatricians, obstetricians and family physicians.

Presbyterian Medical Plaza Monroe

2000 Wellness Blvd., Monroe, NC 28110 704.384.4000

Presbyterian Medical Plaza Monroe offers Union County residents outpatient health services including diagnostic radiology, surgery and primary and specialty physician care.

Competitive Health Care Costs

With more than 1,300 physicians listed in the Mecklenburg County Medical Society directory, it is easy to find the right doctor. Based on the C2ER Cost of Living Index 2013 annual averages, the following describes routine visit costs: \$98.90 for a general doctor's office visit and \$85.07 for a routine dentist office visit.

Directory of Other Health Care Needs Health Services

Charlotte Dental Society 704.376.6555

Mecklenburg County Emergency Medical (MEDIC)
704.943.6000

Mecklenburg County Health Department
704.336.4700

Mecklenburg County Medical Society 704.376.3688

Mecklenburg Mental Health Services 704.336.6404

Specialty Hospitals

Carolinas HealthCare System Behavioral Health — Davidson

16470 Davidson-Concord Rd., Davidson, NC 28036

Opened in 2014, Carolinas HealthCare System Behavioral Health-Davidson offers adult inpatient and outpatient behavioral health services and adult medication management.

Carolinas Medical Center, Mercy Horizons

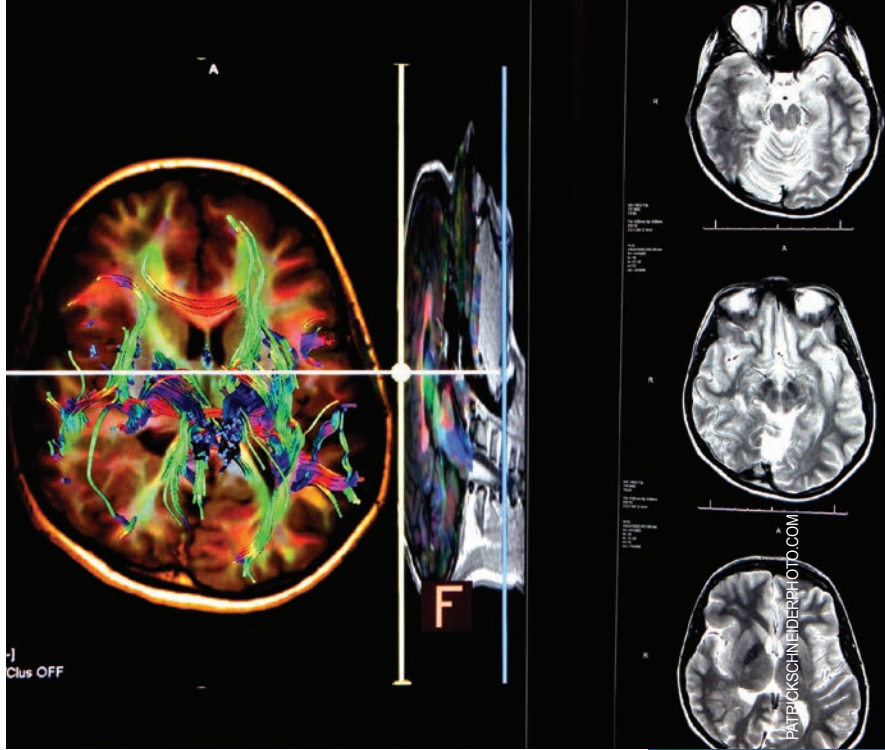
2001 Vail Ave., Charlotte, NC 28207 704.444.2400

Located within CMC-Mercy, Mercy Horizons offers inpatient and outpatient detoxification and substance abuse treatment programs.

Carolinas Specialty Hospital

2001 Vail Ave., 7th Fl. South, Charlotte, NC 28207 704.304.6450

Managed by Acuity Healthcare, Carolinas Specialty Hospital is located within CMC-Mercy. The facility is a 40-bed



long term acute care hospital, specializing in medically complex patients.

Long Term Care and Senior Health

The Charlotte area has more than 90 retirement, assisted living and nursing facilities for older adults, as well as numerous resources for caretakers, older adults and their families. Just 1 Call, 704.432.1111, provides information and assistance to seniors and adults with disabilities in Mecklenburg County. The Centralina Area Agency on Aging also provides information for older adults and caretakers in the greater Charlotte area.

Novant Health Senior Healthcare 704.316.6565

Novant Health Senior Healthcare provides comprehensive primary medical care exclusively for older adults, helping them to maintain functional independence. Physicians also make homecare, rehabilitation and assisted living referrals as needed.

Special Emergency Services

Located in southwest Mecklenburg County at South Tryon St. (Hwy. 49) and Steele Creek Rd. (Hwy. 160), CMC-Steele Creek is the region's first health care pavilion. Built in response to the growing outpatient needs of the community and to improve access to health care, the facility offers a full-service, 24-hour emergency department, as well as advanced diagnostic imaging, laboratory services, physician offices and retail pharmacy.



Knoll | DIRT
www.cbi-nc.com

CBI partners with our clients to fully understand their business and workplace needs and develop premier interior solutions that integrate seamlessly into their business models and fit their unique work environments.
4020 Yancey Rd., Charlotte, NC 704.525.7630



Charlotte Chamber Economic Development
330 S. Tryon St., Charlotte, NC 28202 USA
704.378.1300 | charlottechamber.com | @cltecondev